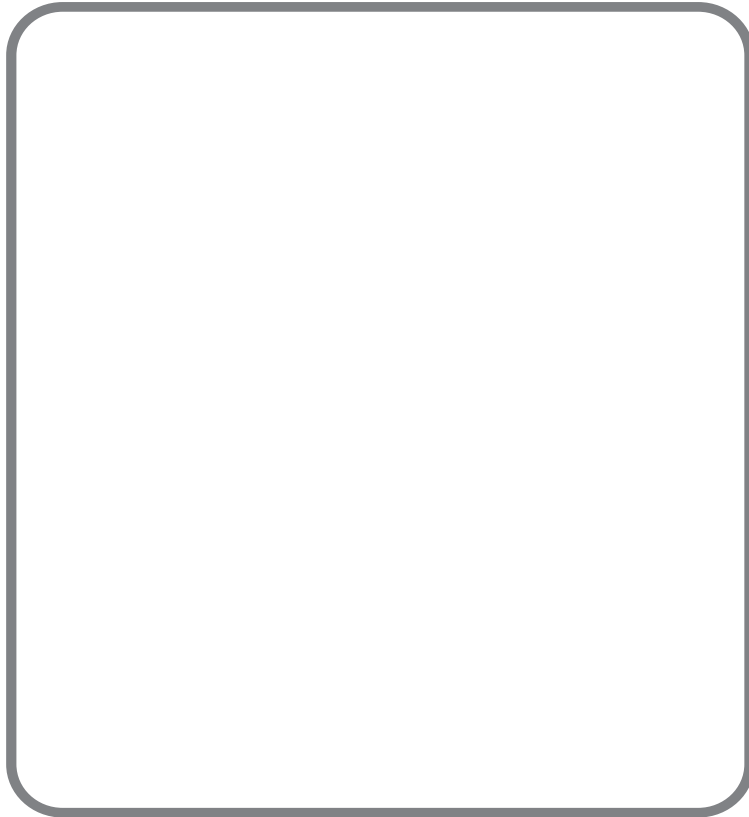


Remote Indicating Tank Contents Gauge **EXTERNAL** Transmitter



Mostly used to measure:

Fuel oil, Diesel, Paraffin, Lube oil, Chemical process plant, Corrosive liquids, Printing inks, Kerosene, Potable water

Principals of operation

The Instrument operates on the hydrostatic principal, where pressure due to head of liquid is sensed by the Transmitter Head and transmitted via a capillary tube to the indicator giving a continuous level reading. The gauge is suitable for installation on any shape or size of storage vessel that is freely vented to atmosphere.

Installation

The transmitter is fitted at any suitable position near the base of the tank, and the indicator shows the contents of liquid above the transmitter. Indicators are graduated to customer requirements, fractions, 0-100%, litres, gallons, tons or m3 etc. Dial sizes 100mm or 160mm. Questionnaire Q28 must be completed.

This instrument can be fitted with a variety of transmitters as shown below, different applications require different solutions, please contact us for advice.

Specifications

Indicator

Mounting: Surface as photo or Flush Panel

Accuracy: 1%

Case & Bezel: 304 St. St Bayonet locking bezel

Measuring Element: Phosphor Bronze

Movement: Brass

Dial: White Aluminium with black markings

Pointer: Black Oxidised Aluminium

Window: Glass/Clear Acrylic

Gasket Seal: Food Quality Rubber

Type BRP Standard

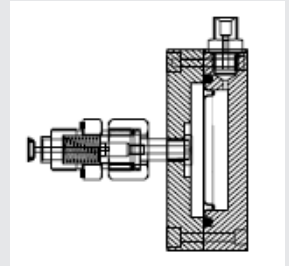
Body: Black Acetal

Connection: 3/4" bsp Brass self-closing valve

Sensing Element: Nitrile/Hydrin diaphragm

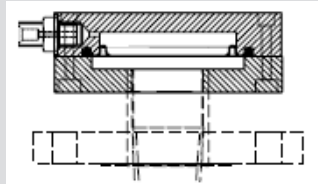
Capillary: 2mm o.d. copper micro bore tube with 9mm o.d. solid black PVC protection sheath

Schematic

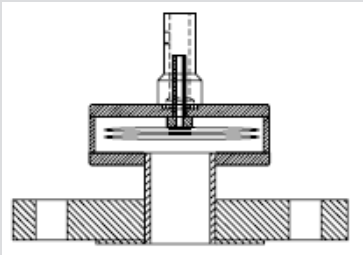


Remote Indicating Tank Contents Gauge **EXTERNAL** Transmitter

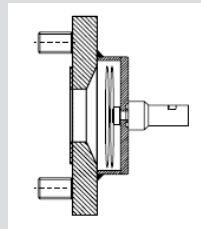
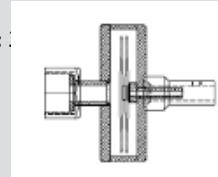
Type BPT (Threaded) or BPF (Flanged)
Body: Black Acetal
Connection: PVC or ABS threaded or flanged to suit customer requirements
Sensing Element: Nitrile/Hydrin diaphragm
Capillary: 2mm o.d. copper micro bore tube with 9mm o.d. solid black PVC protection sheath



Type BSF Stainless Steel Flanged >= DN50
Body: 316 Stainless Steel
Connection: 316 Stainless Steel flange to suit customer requirements
Sensing Element: 316 Stainless Steel Capsule
Capillary: 2mm o.d. copper micro bore tube with 9mm o.d. solid black PVC protection sheath or 8mm O.D. St St



Type BST Stainless Steel Body:
Stainless Steel Connection: 3/4" bsp Stainless Steel Female nut & tail or 1/2" bspt St St stud compression fitting
Sensing Element: 316 Stainless Steel Capsule
Capillary: 2mm o.d. copper micro bore tube with 9mm o.d. solid black PVC protection sheath or 8mm O.D. St St armoured



Type BSF Stainless Steel Flanged <DN50 Body:
316 Stainless Steel Connection: 316 Stainless Steel flange to suit customer requirements
Sensing Element: 316 Stainless Steel Capsule
Capillary: 2mm o.d. copper micro bore tube with 9mm o.d. solid black PVC protection sheath or 8mm O.D. St St

Type BFD Flush Diaphragm Flanged DN80 PN 25
Body: Black Acetal
Connection: 316 Stainless Steel flange to suit customer requirements
Sensing Element: Flush Nitrile/Hydrin diaphragm
Capillary: 2mm o.d. copper micro bore tube with 9mm o.d. solid black PVC protection sheath

