

## HIGH PRESSURE GAUGE

This gauge is manufactured for applications where the medium or atmosphere could attack standard gauge components. The connection and tube are welded and then heat treated to relieve stresses and improve accuracy. Construction is in accordance with EN 837-1. Various standard ranges are available, single or dual scale, and dials can be printed to suit individual requirements



## **HIGH PRESSURE GAUGE**

This gauge is specially constructed to withstand pressures up to 6000 bar, using heat treated Ni-Span C tubing. It is normally supplied in a safety pattern case and the standard connection is female high pressure. Dials can be specially printed to suit customers requirements.

### **STANDARD SPECIFICATION**

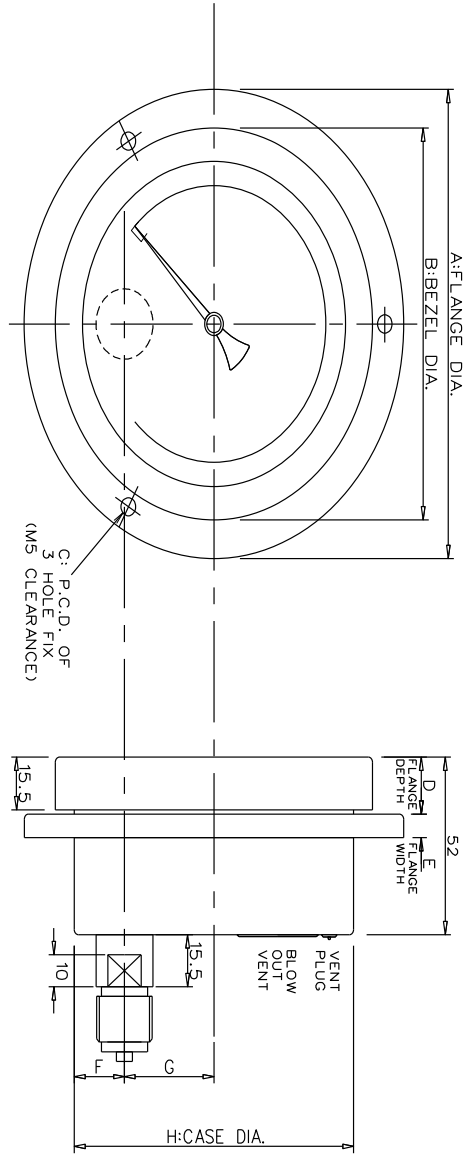
DIAL SIZE	-	100, 160 or 250mm dia.
MOUNTING TYPES	-	Direct bottom or back, surface mounting (back flange), flush panel mounting clamp or 3-hole fixing
RANGES	-	Up to 6000 bar (87000 psi)
CASE AND BEZEL MATERIAL	-	304 st.st. case with 304 st.st. polished bezel 250mm dia. has integral aluminium case and bezel.
MOVEMENT	-	Brass. May be supplied viscous damped for vibrating/pulsating applications.
DIAL	-	Anodised aluminium
POINTER	-	Aluminium black coated
WINDOW	-	Polycarbonate
TUBE	-	Ni-Span C
BODY	-	316 st.st
CONNECTION	-	1/2" or 9/16" UNF female or M16 x 1.5 female
ACCURACY	-	1 % in accordance with EN 837-1/Class 1
ELECTRIC CONTACTS OR AUXILIARY POINTERS	-	Single or double available

**The stainless steel cased models may be liquid filled for vibrating or pulsating applications.**



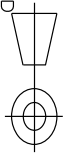
DRG.NO. A 1166

IF IN DOUBT ASK



GAUGE SIZE	A	B	C	D	E	F	G	H
100 mm	140	117	126	17	7	18.5	33	103
150 mm	192	165	178	17	7	41.5	33	149.5

ALL DIMENSIONS IN mm  
TOLERANCES ± 0.2mm  
UNLESS OTHERWISE STATED



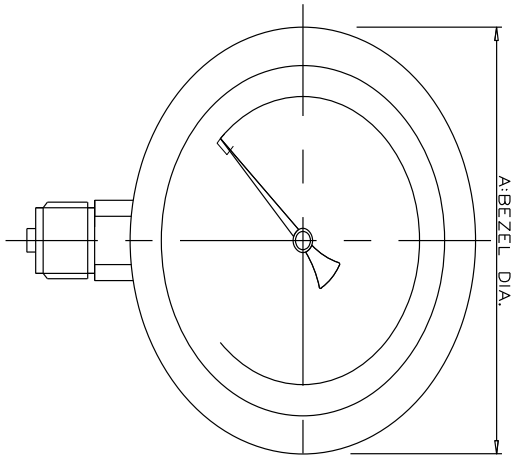
ISSUE	AMENDMENT	DATE
1	ORIGINAL	28/1/12

SCALE:- N.T.S.  
100/150mm ST.ST. PM 3 HOLE CASE OUTLINES  
28/1/12  
S.S.

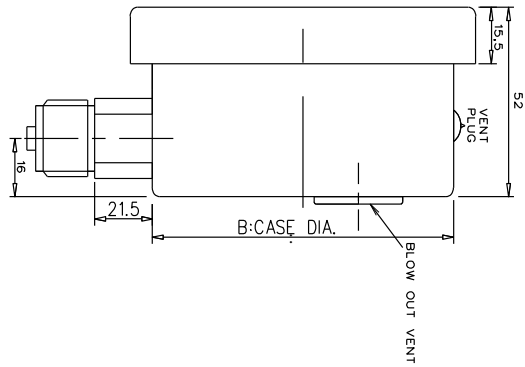


DRG.NO. A-1167

IF IN DOUBT ASK



GAUGE SIZE	A	B
100 mm	117	103
150 mm	165	149.5



ISSUE	AMENDMENT	DATE
1	ORIGINAL	28/11/12

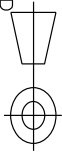
SCALE:- N.T.S.

100/150mm ST.ST. DB CASE OUTLINES

28/11/12

S.S.

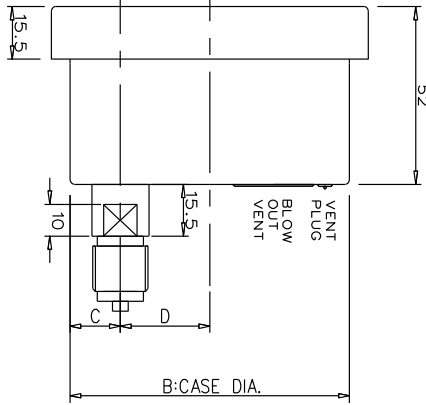
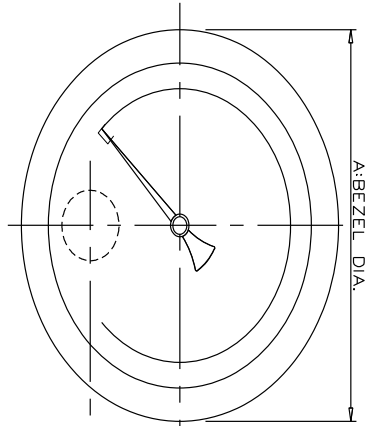
ALL DIMENSIONS IN mm  
TOLERANCES  $\pm 0.2$ mm  
UNLESS OTHERWISE STATED





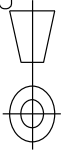
DRG.NO. A 1168

IF IN DOUBT ASK



GAUGE SIZE	A	B	C	D
100 mm	117	103	18.5	33
150 mm	165	149.5	41.5	33

ALL DIMENSIONS IN mm  
TOLERANCES  $\pm 0.2\text{mm}$   
UNLESS OTHERWISE STATED



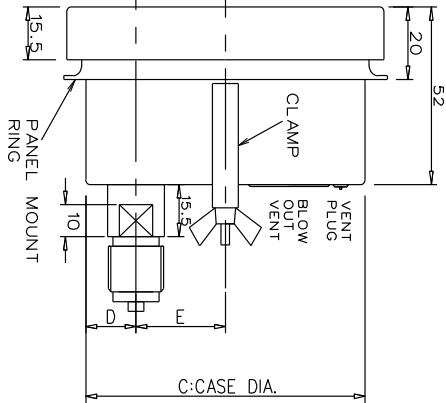
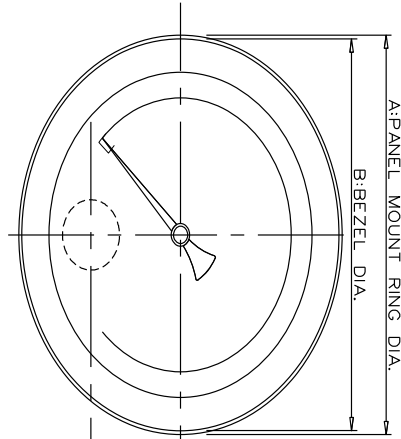
ISSUE	AMENDMENT	DATE
1	ORIGINAL	28/11/12

SCALE:- N.T.S.  
100/150mm ST.ST. DK CASE OUTLINES  
28/11/12  
S.S.



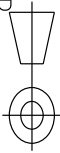
DRG.NO. A 1169

IF IN DOUBT ASK



GAUGE SIZE	A	B	C	D	E
100 mm	120	117	103	18.5	33
150 mm	168	165	149.5	41.5	33

ALL DIMENSIONS IN mm  
TOLERANCES ± 0.2mm  
UNLESS OTHERWISE STATED



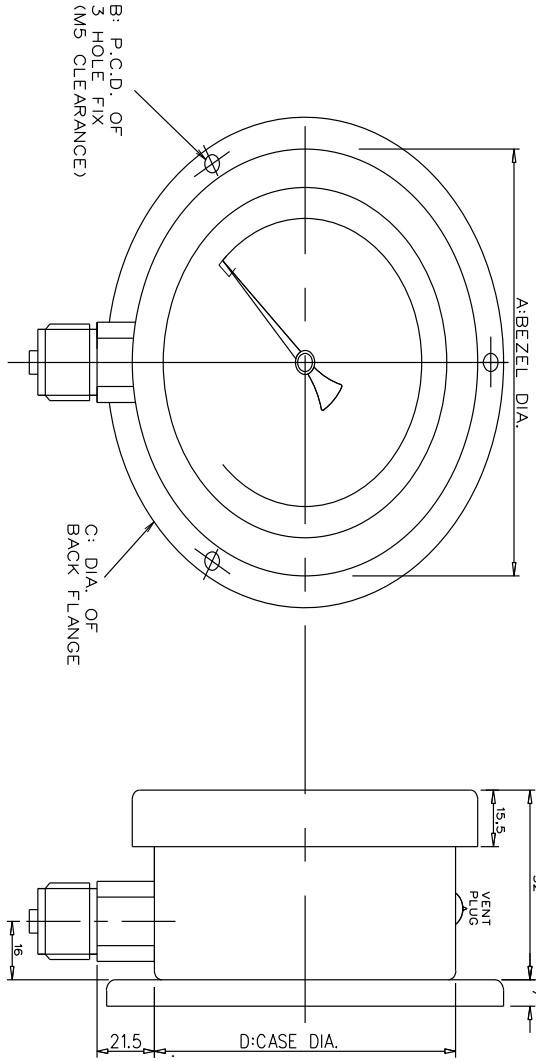
ISSUE	AMENDMENT	DATE
1	ORIGINAL	28/1/12

SCALE:- N.T.S.  
100/150mm ST.ST. PC CASE OUTLINES  
28/1/12  
S.S.



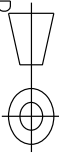
DRG.NO. A1170

IF IN DOUBT ASK



GAUGE SIZE	A	B	C	D
100 mm	117	126	140	103
150 mm	162	178	192	149.5

ALL DIMENSIONS IN mm  
TOLERANCES  $\pm 0.2\text{mm}$   
UNLESS OTHERWISE STATED



ISSUE	AMENDMENT	DATE
1	ORIGINAL	28/11/12

SCALE: - N.T.S.  
100/150mm ST.ST. SM CASE OUTLINES  
28/11/12  
S.S.