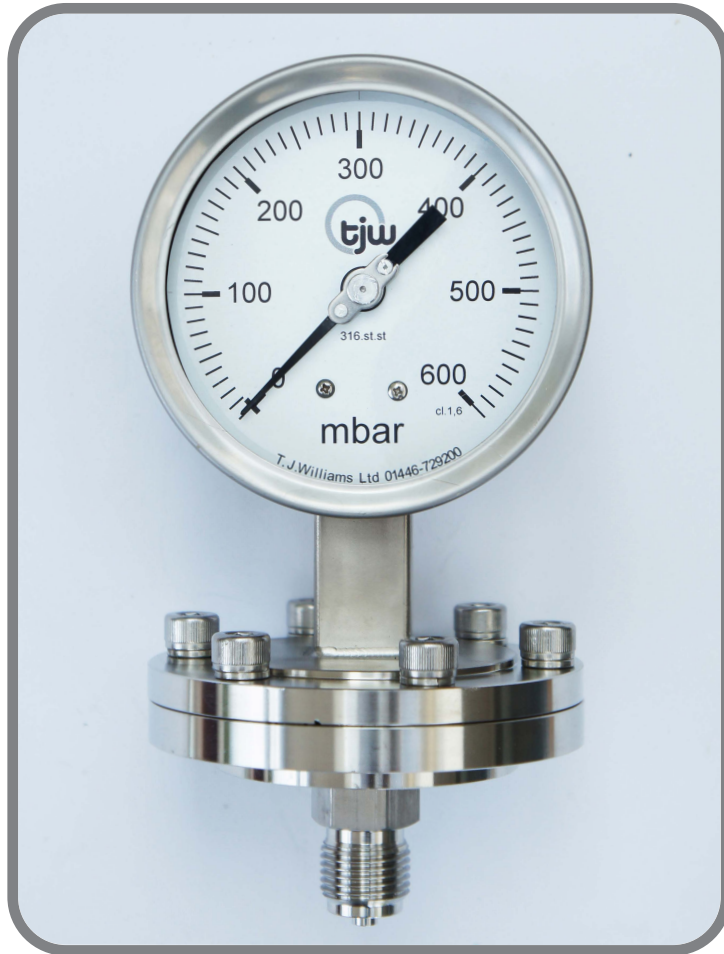


Diaphragm Gauge - All Stainless Steel



Diaphragm Type - Model 21S

Application:

For use where the medium being measured is highly viscous and contains solids in suspension, thus a bourdon tube gauge is impractical and could therefore block.

Nominal Dial Size: 100, 160, 200, 250mm

Accuracy: **Class 1.6%**

Ranges:

0-25mbar to 25bar Pressure and vacuum or compound



Specifications

Mounting: Direct:

Bottom or back entry

Connection Material:

316 St. St.

P.T.F.E. wetted parts available

Measuring Element:

Steel/Stainless Steel Diaphragm

or P.T.F.E. protected

Movement:

St. St. or Brass-nickel plated

Dial:

*White Aluminium with black markings
or as required*

Pointer:

Black Oxidised Aluminium

Case & Bezel:

304 St.St.

Window:

Glass or Clear Acrylic

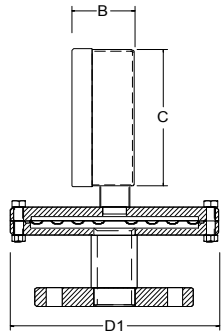
Pressure Connections:

3/8"bsp, 1/2"bsp, 1/2"npt or flanged

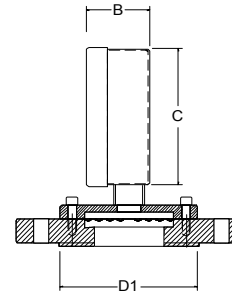
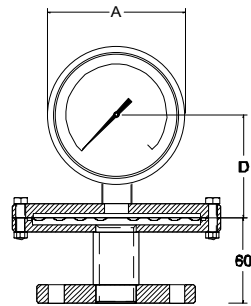
or to customer requirements

*Different flanges to customer requirements
at the manufacturing stage will replace
the threaded base.*

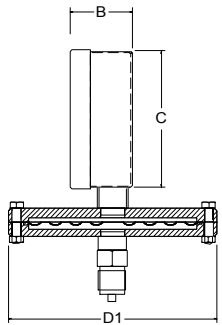
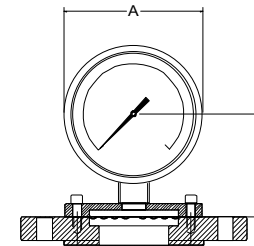
Diaphragm Gauge - All Stainless Steel



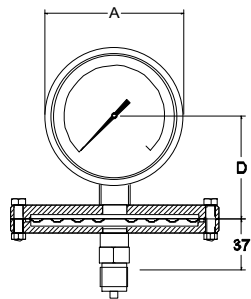
Model 21BF10



Model 21BF30



Model 21BT10



Ranges: 25 - 400mbar

Dial Size:	A	B	C	D	D1
100mm:	112	48.5	99	76	152
200mm:	162	48.5	148	94	152

Ranges: 0.6 - 25bar

Dial Size:	A	B	C	D	D1
100mm:	112	48.5	99	76	100
200mm:	162	48.5	148	94	100

40, 50 & 63mm gauges Model 601, 604, 607 & 609