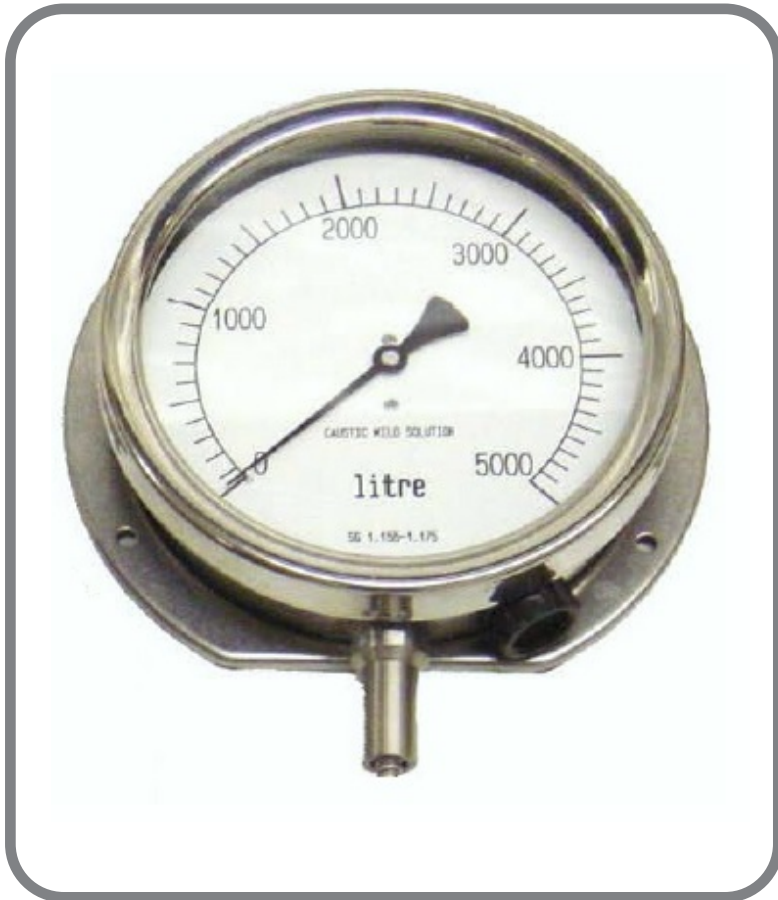


Tank Contents Gauge



Application

Can be used for water, fuel oil, creosote, paraffin, lubricants and tanks containing more aggressive chemicals with consideration being given to protection from chemical contact of the internal parts of the gauge.

It has many applications, in Dairies, Gas Works, Breweries & chemical works etc. Being a reliable and accurate instrument, and combined with its ease of installation, makes this an obvious choice. Suitable for tanks up to 8m deep, dependant upon SG, and liquids of viscosity up to 350 sec.

Operation

The model 35 gauge uses the hydrostatic principle of proven reliability and simplicity, with push to read electric pump using 4 AAA batteries. This method requires minimum installation time and gives important advantages in the safe measurement of volatile liquids. The electric pump charges the system with air under pressure. The liquid is displaced from the balance chamber at the bottom of the tank, while excess air escapes via the tanks vent.

The resulting pressure in the balance chamber is indicated and is proportionate to the head of liquid in the tank. The gauge unit may be disconnected at any time without upsetting the calibration. Maintenance is not normally required, except battery replacement, as there are no moving parts external to the gauge unit.

Calibration

Each gauge unit is individually calibrated and scaled, to customer requirements for Rectangular, Cylindrical (Horizontal or Vertical) tanks in litre, gallon, kg, tonne etc.

Installation

The model 35 contents gauge mounted directly into the top of the tank insert the balance chamber through a 1" or 1 ½" BSP tank boss on top of the tank allowing it to rest on the bottom, then tighten bush. There is no need to empty the tank.